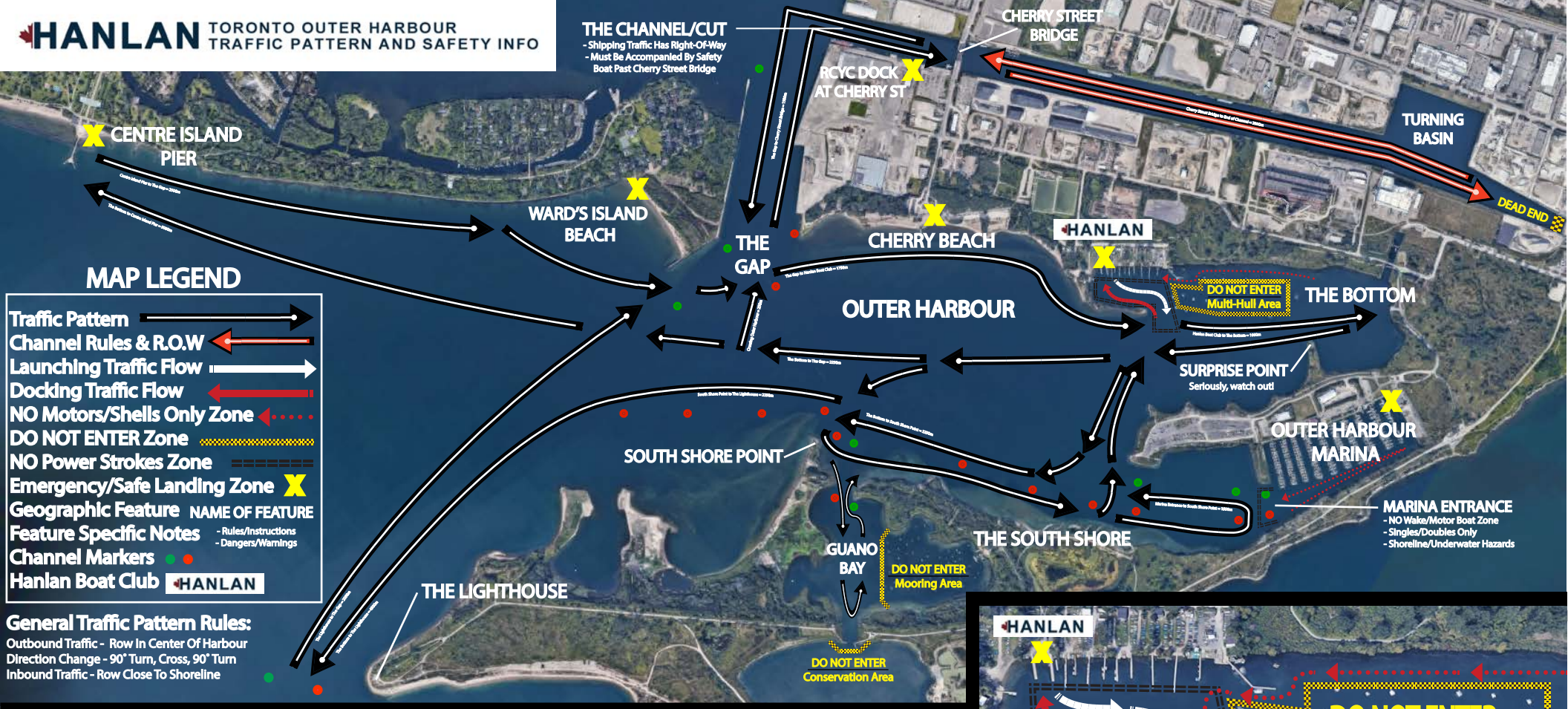


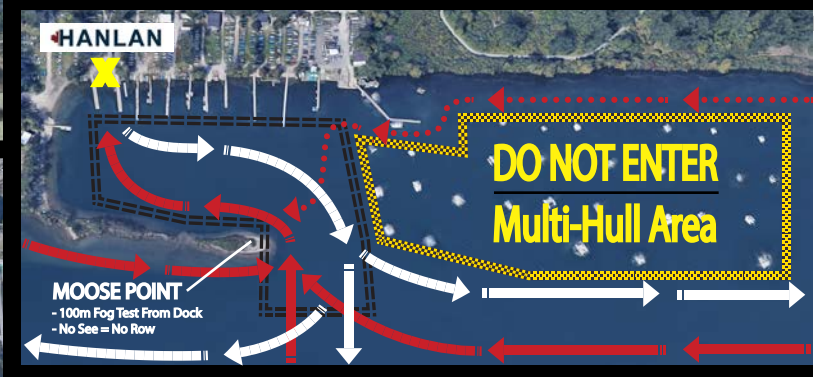
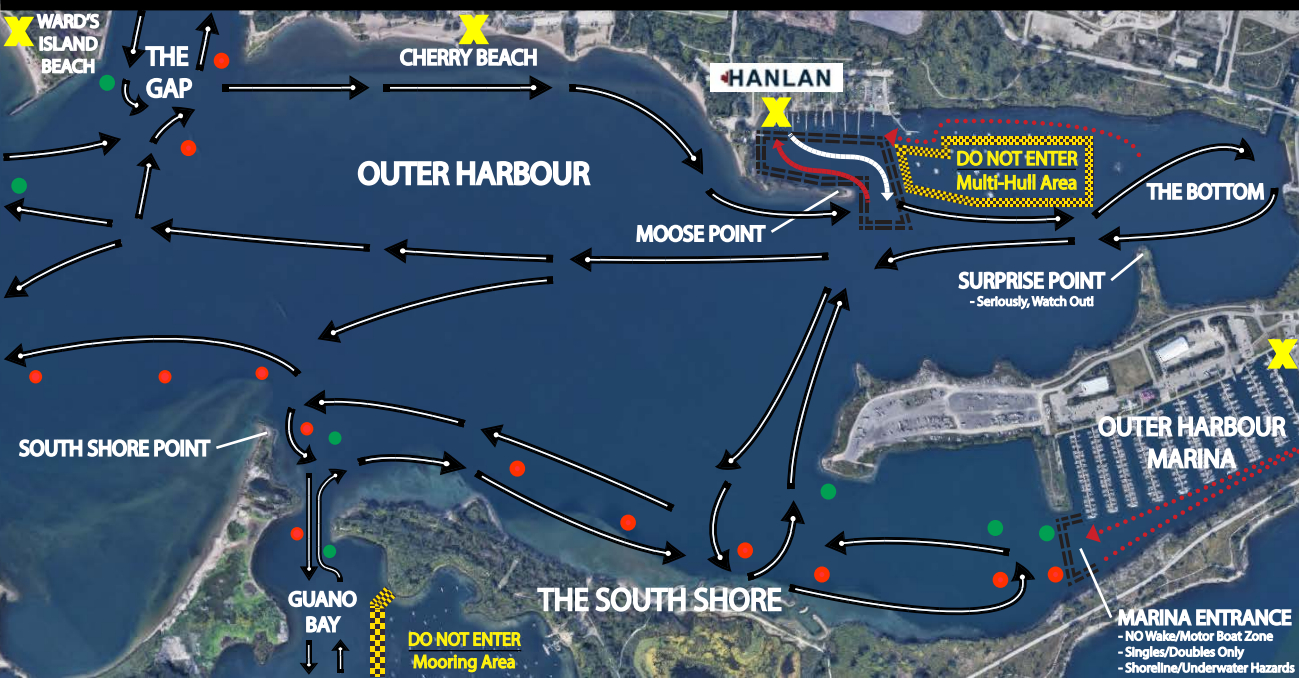
THE CHANNEL/CUT
 - Shipping Traffic Has Right-Of-Way
 - Must Be Accompanied By Safety Boat Past Cherry Street Bridge



MAP LEGEND

- Traffic Pattern (Black arrow)
- Channel Rules & R.O.W (Red arrow)
- Launching Traffic Flow (White arrow)
- Docking Traffic Flow (Red arrow)
- NO Motors/Shells Only Zone (Dotted red line)
- DO NOT ENTER Zone (Dotted yellow line)
- NO Power Strokes Zone (Dashed white line)
- Emergency/Safe Landing Zone (Yellow X)
- Geographic Feature (NAME OF FEATURE)
- Feature Specific Notes (- Rules/Instructions, - Dangers/Warnings)
- Channel Markers (Red and Green dots)
- Hanlan Boat Club (HANLAN logo)

General Traffic Pattern Rules:
 Outbound Traffic - Row In Center Of Harbour
 Direction Change - 90° Turn, Cross, 90° Turn
 Inbound Traffic - Row Close To Shoreline



HANLAN

- ALL BOATS MUST HAVE:**
- A WORKING CELL PHONE
 - A WHISTLE
 - A PFD FOR EACH CREW MEMBER***
 - SIGNED OUT
 - A SHORE BUDDY/CONTACT

- NO ROWING WHEN:**
- FOG (MOOSE POINT IS NOT VISIBLE)
 - WIND IS +30KM/H
 - GUSTS ARE +40KM/H
 - WHITE CAPS ARE VISIBLE
 - HEAVY RAIN IS PRESENT
 - THUNDER/LIGHTNING IS PRESENT
 - BEFORE SUNRISE***
 - AFTER SUNSET***
 - COLD WATER RULES IN EFFECT***
 - COACH OR CLUB CAPTAIN DECLARES

- COLD WATER RULES:**
- MUST HAVE SAFETY BOAT WITH COACH
 - MUST BE WITHIN 150M OF SAFETY BOAT
 - CHECK SAFETY POLICY

EMERGENCY NUMBERS:
 DIAL 9-1-1 IN EMERGENCY
 TORONTO POLICE MARINE UNIT - 416-808-5800
 HARBOUR MASTER - 416-462-1228
 ST. MICHAEL'S HOSPITAL - 416-864-5094

EMERGENCY PROCEDURES:
IS A CREW MEMBER UNCONSCIOUS?
 - CALL 9-1-1 AND IMMEDIATELY PROCEED TO NEAREST SAFE LANDING ZONE
IS A CREW MEMBER NOT BREATHING?
 - BEGIN CPR AND CALL 9-1-1
 - IMMEDIATELY PROCEED TO A SAFE LANDING ZONE
IN THE EVENT OF SWAMPING OR CAPSIZING:
 - STAY WITH THE BOAT & DO NOT SWIM TO SHORE
 - CALL/SIGNAL FOR HELP

COLLISIONS, DAMAGES AND INJURIES:
 MUST BE REPORTED TO A COACH IMMEDIATELY, DOCUMENTED USING AN INCIDENT REPORT FORM & SIGNED BY ALL PARTIES INCLUDING COACH.

***SEE SAFETY POLICY